

What is WPS?

Women, Peace and Security (WPS)

The United Nations and WPS - Background -

Internal conflicts in 1990's



1990's Conflict related sexual violence in the former Yugoslavia and Rwanda became international issues



1995 World Conference on Women Aiming to increase women's participation to decision making for conflict resolution



1998 Rome Statute of the International Criminal Court

Stipulated sexual violence in conflict situations are war crimes.



With these events...

In 2000, the UN Security Council unanimously adopted its Resolution 1325 on Women, Peace and Security, which, for the first time, recognized women as active agents at all levels of conflict prevention, peacekeeping and others.

Japan and WPS - Government of Japan initiatives -

- Formulating National Action Plans (NAP) on WPS
- The NAP covers WPS not only in the context of conflict but also disaster, given Japan's experience of overcoming a variety of large-scale natural disasters

What is WPS?

- Providing protection and relief while recognizing the needs of special protection to women, girls, and those who are in more vulnerable situations under conflict and disaster;
- Also having women participate to all levels of conflict resolution and disaster relief with leading roles and proactive manners

➡ As a result, WPS contributes to more sustainable peace.



Japan Ministry of Defense (JMOD) and WPS Promotion Rationales and Necessities

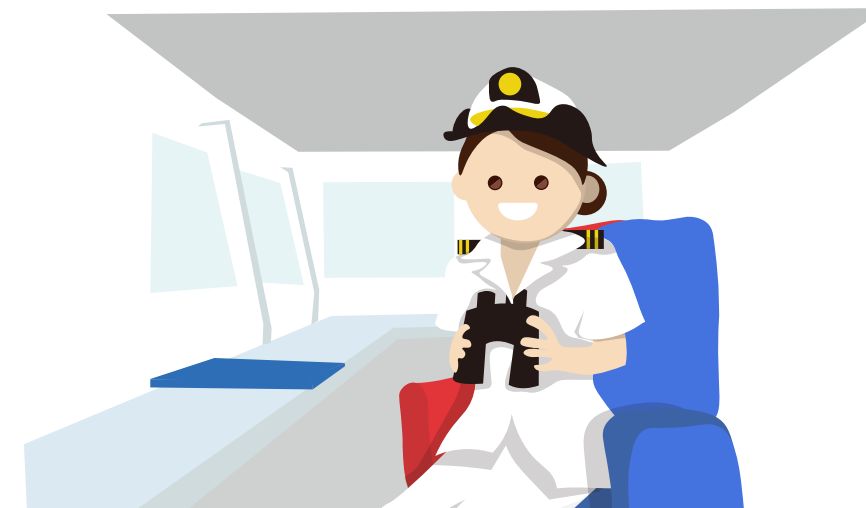


- Women compose half of the population
- Women and girls are in particularly vulnerable situation under conflict and emergency



WPS activities based on the needs

Direct contribution to protection of Japanese nationals



- Setting favorable environment where diverse human resource can demonstrate their abilities through promotion of women participation to a variety of areas



- Capacity enhancement of Japan Self-Defense Force (JSDF) personnel as the core element of defense capabilities
- Operational Effectiveness

Fundamental reinforcement of defense capabilities



- WPS cooperation with partner countries sharing common values
- Integration of gender perspective for more effective implementation of JSDF operation abroad



As a responsible member of international community

Contribution to peace and stability

The activities conducted by the Japan Self-Defense Forces (JSDF) are Already in line with the WPS Concept!

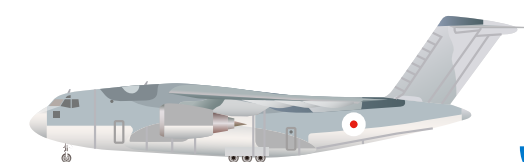


Disaster Relief

2024 Noto Peninsula Earthquake



Many female JSDF personnel have also been actively providing support. Through applying their perspectives, they identify the needs of the affected people at evacuation centers and deliver essential supplies as well as providing bathing support.



Transportation of Japanese Nationals Overseas

In the event of natural disasters, turmoil and other emergencies overseas, we work closely with relevant ministries and agencies to protect and rescue or transport Japanese nationals and other people overseas.

Transportation of Japanese nationals and others from Israel

Female JSDF personnel were dispatched and provided attentive support to affected women, thereby contributing to a smooth transportation mission!



More than 90% of JSDF personnel are male.

Meanwhile, in reality, the affected population to whom JSDF interacts are composed of half male and half female.



As interactions with citizens through activities, such as disaster relief, are increasing both domestically and internationally, **participation of female JSDF personnel and carrying out activities integrating gender perspective is more than ever crucial!**



[Terminology]

Gender Perspective: A perspective that considers how gender-based differences shape the needs and interests of women and men.

Gender: Socially and culturally constructed differences among sexes. It is different from the term of 'sex' which defines biological differences among the human race.

Reinforcing JMOD/JSDF Efforts for WPS Promotion

Adoption of “JMOD WPS Promotion Plan”

Structural Development

Establishment of the HQ for WPS Promotion in JMOD

Adoption of the JMOD WPS Promotion Plan to strengthen WPS efforts



Establishment of posts on WPS

Assignment of civilian and uniformed Gender Advisors



Change of Mindset

WPS Seminars for Staff including Senior Officials

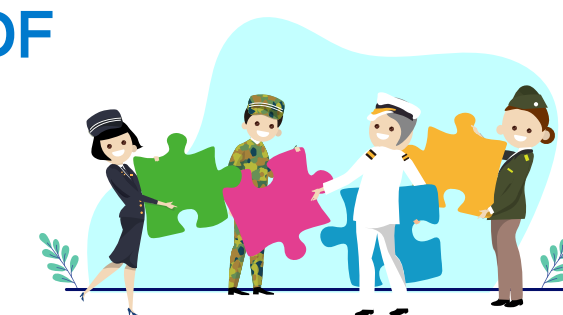
Confirmed the importance of senior officials becoming WPS champions to lead WPS initiative and activities!



International Cooperation

Capacity Building Assistance with WPS element

Reflect WPS in JMOD/SDF capacity building assistance programs on PKO, humanitarian assistance/disaster relief etc.



Hosting International WPS Seminars

Convened international WPS events by inviting eminent experts on WPS serving for the UN and conflict affected countries, which have contributed to WPS promotion in partner countries